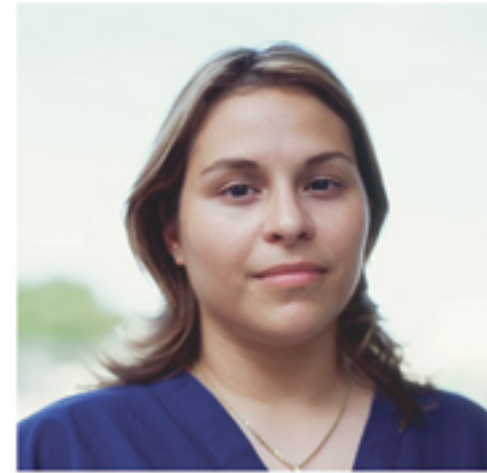




COMMUNITY VICTIM & WITNESS

ADVOCACY PROGRAM



HOW CAN WE HELP?

[SERVICES ARE FREE OF CHARGE]

- Provide info about the Municipal Court System, as well as obtaining the status of your case
- Crisis intervention
- Transportation assistance and childcare
- Property return guidance
- Assistance with preparation of needed court documents
- Info and assistance with VCCO applications
- Assistance with obtaining info to receive restitution and other funds
- Referrals (i.e., counseling, social service agencies, etc.)
- Emergency Services
- Interpreting services (Spanish Speaking)

WHO CAN WE HELP?

Neptune and Asbury Park victims and witnesses of crime

WHO ARE CRIME VICTIMS?

Crime victims are innocent people who suffer harm when someone else breaks the law.

Many crime victims must learn to cope with changes in health, outlook, and relationships. Crime can cause physical injuries, emotional harm and financial hardships. Fortunately, most victims can adjust to changes caused by crime and return to a normal way of life.



For more information or assistance call a MERCY CENTER ADVOCATE at 732.774.9397 x27 or x26 (Spanish Speaking)



MERCY CENTER
HOPE • HELP • HEALING

1104 Main Street, Asbury Park, NJ 07712
732.774.9397

RESOURCES

COMMUNITY AFFAIRS AND RESOURCE CENTER
732.774.3282

MONMOUTH COUNTY CHILD ADVOCACY CENTER
732.431.7160 x8660

DIVISION OF CHILD PROTECTION AND PERMANENCY HOTLINE (DCP&P)
1.877.652.2873

MENTAL HEALTH ASSOCIATION
1.800.367.8850

CHILDREN'S SYSTEM OF CARE (MOBILE RESPONSE SERVICES)
1.877.652.7624

MONMOUTH COUNTY PROSECUTOR'S OFFICE VICTIM-WITNESS UNIT
732.431.6459

MERCY CENTER-FAMILY RESOURCE CENTER
732.774.9397 x22

NATIONAL ORGANIZATION FOR VICTIM ASSISTANCE (NOVA)
1.800.879.6682

MONMOUTH COUNTY DEPARTMENT OF HUMAN SERVICES- DIVISION OF SOCIAL SERVICES
732.431.6000

DOMESTIC VIOLENCE; 180 TURNING LIVES AROUND
1.888.843.9262

SEXUAL ASSAULT HOTLINE
732.264.RAPE